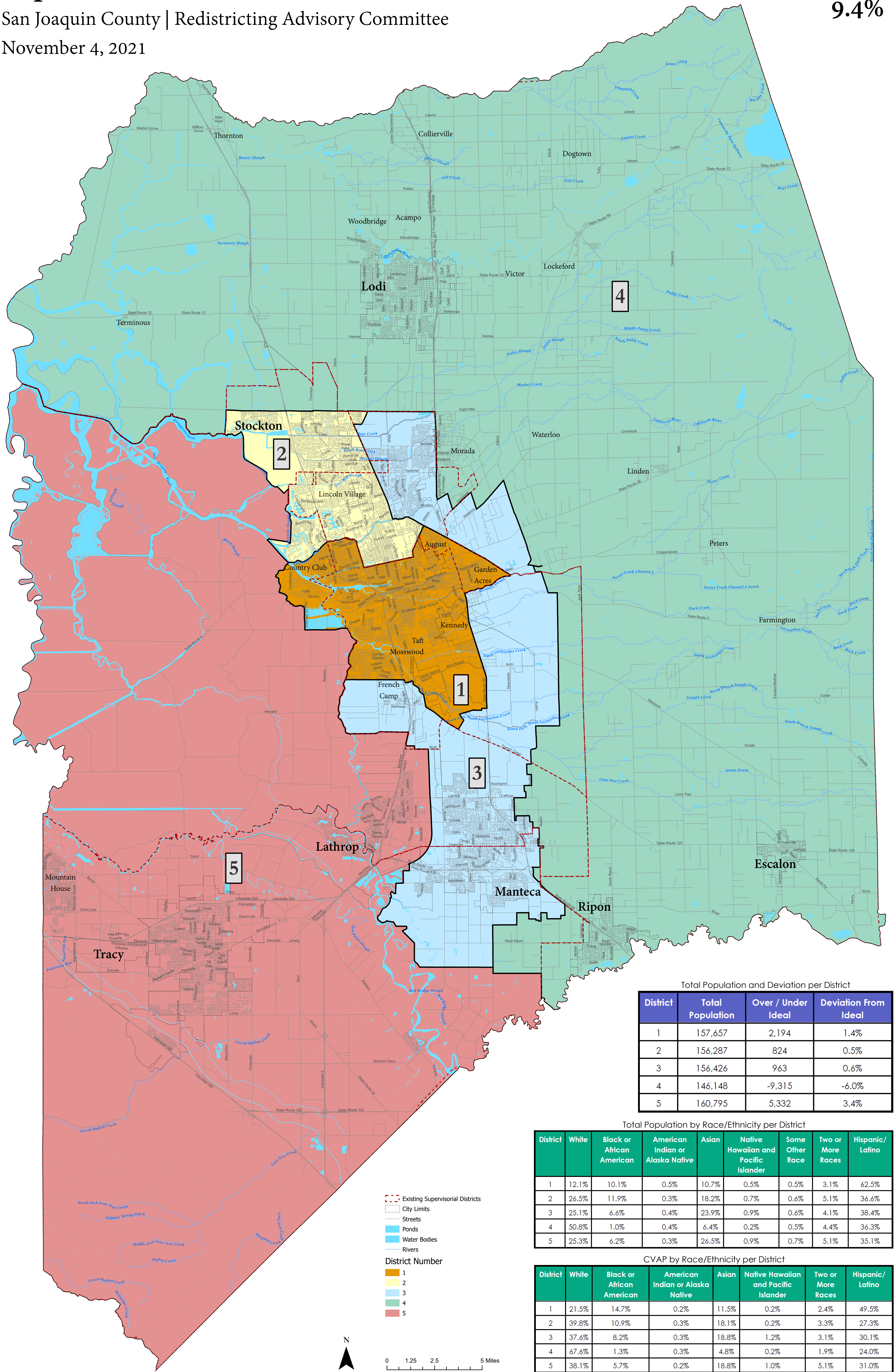


Supervisory Districts Draft Plan D3

San Joaquin County | Redistricting Advisory Committee

November 4, 2021

Total Deviation
9.4%



Total Population and Deviation per District

District	Total Population	Over / Under Ideal	Deviation From Ideal
1	157,657	2,194	1.4%
2	156,287	824	0.5%
3	156,426	963	0.6%
4	146,148	-9,315	-6.0%
5	160,795	5,332	3.4%

Total Population by Race/Ethnicity per District

District	White	Black or African American	American Indian or Alaska Native	Asian	Native Hawaiian and Pacific Islander	Some Other Race	Two or More Races	Hispanic/Latino
1	12.1%	10.1%	0.5%	10.7%	0.5%	0.5%	3.1%	62.5%
2	26.5%	11.9%	0.3%	18.2%	0.7%	0.6%	5.1%	36.6%
3	25.1%	6.6%	0.4%	23.9%	0.9%	0.6%	4.1%	38.4%
4	50.8%	1.0%	0.4%	6.4%	0.2%	0.5%	4.4%	36.3%
5	25.3%	6.2%	0.3%	26.5%	0.9%	0.7%	5.1%	35.1%

CVAP by Race/Ethnicity per District

District	White	Black or African American	American Indian or Alaska Native	Asian	Native Hawaiian and Pacific Islander	Two or More Races	Hispanic/Latino
1	21.5%	14.7%	0.2%	11.5%	0.2%	2.4%	49.5%
2	39.8%	10.9%	0.3%	18.1%	0.2%	3.3%	27.3%
3	37.6%	8.2%	0.3%	18.8%	1.2%	3.1%	30.1%
4	67.6%	1.3%	0.3%	4.8%	0.2%	1.9%	24.0%
5	38.1%	5.7%	0.2%	18.8%	1.0%	5.1%	31.0%